

NEWSLETTER



26th May 2023



The Woodhouse Support Hub

<https://sites.google.com/woodhouse.academy/support>

How to get in touch



@WoodhousePA



0121 464 1769



www.woodhouse.priacademy.co.uk



enquiries@whp.greenheartlearning.org



families@whp.greenheartlearning.org

- Use this for any queries. Monitored by the Inclusion Team
- You can also send us anything you'd like put in the newsletter. This can be photos, learning, resources and any good news stories you may have.



sensupport@whp.greenheartlearning.org

- Use this for any queries about any additional learning needs or concerns.

Accelerated Reader

Renaissance, the company who deliver our Accelerated Reader platform are performing a very important upgrade / update soon so this year there will be an early cut-off date for quizzing.

Children will not be able to do quizzes after July 13th.

Toast in the morning

We will be stopping serving our free toast in the mornings at 8:50. Please arrive within plenty of time if your child wants toast as it will not be served after this point. This is to give children enough time to get to class without being late.

Parents having toast for younger siblings are accepting the responsibility for any allergies. Allergen sheets are available from the kitchen upon request. All of our toast contains Gluten and Dairy

Stars of the Week



The following children are Stars of the Week
for the week ending 26th May.

Nursery

Isabella
Logan

Reception

Rowan
Mario
Mannix
Natalia

Year One

Bine
Benjamin
Jaxon
Aria

Year Two

Samuel
Marie
Harriet
Leo

Year Three

Rhyley-Joe
Aisosa
Sophia
Tammy
Reon

Year Four

Adam
Yunus
Nafees
Arthur

Year Five

Rawnaq
Sanad
Leo
Mila J

Year Six

Isabella
Toby
Emily
Harry B
Falay





School Dinner Menu

5th – 9th June

NOTE: We operate a 3-week rolling menu. Keep an eye on the menu each week for changes.

We use a range of suppliers, including local businesses so menus are subject to change if items are unavailable.

Monday	Tuesday	Wednesday	Thursday	Friday
Chicken Nuggets	Fish Fingers	Roasted Chicken with Stuffing	Jacket Day	Pizza Day
Vegetable Fingers	Vegetable Samosa	Roasted Quorn with Stuffing	Jacket Potato	Cheese and Tomato Pizza
Potato Croquette	Cheese & Onion Roll	Assorted Potatoes and Seasonal Vegetables	With Butter, Cheese, Baked Beans, Tuna Mayo, Coleslaw or BBQ Beef	Or Pepperoni Pizza
Baked Beans or Vegetables	Peas and Sweetcorn		Tomato & Basil Pasta	With Chips and Fresh Salad
Arctic Roll	Iced Lemon Drizzle Cake	Chocolate Concrete & Custard	Angel Delight	Selection of Fruit Desserts
Fresh Fruit and Fresh Salad Bar available daily				

Food Allergies

In order to keep our dietary records up to date, please inform the main office of any changes to your child's dietary requirements, allergies and intolerances. We are able to cater for most requirements but must know in advance.

If your child only eats Halal meats but can eat fish, please also let the main office know. We do not serve Halal meats. Please either contact the main office on 0121 464 1769 or email us on families@whp.greenheartlearning.org

Please also remember that we are a NUT FREE SCHOOL

attendance **MATTERS**

Week 31: 15th – 19th May

Whole School Attendance for the year currently running at: 93%

Last week's attendance:

EYFS & KS1: **94.65%** KS2: **93.04%** Whole School:
93.53%

Our Attendance target for this coming year is 97%

Class	Attendance for the week		Class	Attendance for the week
Nursery	89.43%		3A	89.31%
RL	94.67%		3S	98.33%
RW	91%		4H	92.59%
1B	94.48%		4N	98.33%
10	96.55%		5H	95.67%
2FP	92.07%		5W	95.16%
2W	94.67%		6D	98.28%
R	87.50%		6W	96.50%
			6WO	97%

3S

4H

Congratulations to **4H & 3S** who had the best class attendance last week.

Well done to **10** had the best class attendance in EYFS & KS1 last week.

Will you help your class have the best class attendance *next week?*

2022 – 2023 Academic Year

Half Term: Monday 29th May to Friday 2nd June

Monday 5th June - First day school open for children

Monday 19th – Wednesday 21st June

- Year 6 Bell Heath Residential

Wednesday 21st June – Stay and Play sessions

- Reception: 9:30 – 10:30
- Nursery: 2:00 – 3:00

Thursday 22nd June – Children's University Graduation

- 2:15 in school for invited parents

Wednesday 28th June – Stay and Play sessions

- Reception: 9:30 – 10:30
- Nursery: 2:00 – 3:00

Wednesday 5th July – Nursery Graduation AM & PM

Monday 10th July – EYFS & KS1 Sports Day at Woodhouse – 1 – 3pm

Tuesday 11th July – KS2 Sports Day at Woodhouse – 1 – 3pm

Friday 14th July – Year 6 Production – 2pm in the hall

Tuesday 18th July – Summer Concerts

Wednesday 19th July – Terrific Topic Gallery – In the hall – 3:30 – 4:30

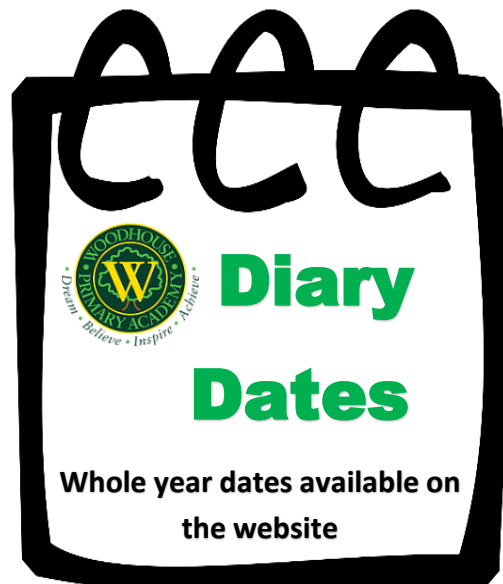
Wednesday 19th July – Parent drop in sessions to discuss reports if needed

Friday 21st July – Year 6 Leavers Assembly and Graduation – 2:30 in the hall

Friday 21st July - Last day of school year for children

Monday 24th July and Tuesday 25th July - Inset day, school closed to children

Further dates here: <https://www.woodhouse.priacademy.co.uk/news-and-events/school-events>



Shakespeare's first folio is being displayed in Smethwick. There are also performances and workshops for children (even learning Shakespearean insults!) Birmingham's poet laureate will be there too as well as Tudor dancing.

Here are the details:

<https://www.dorothyparkes.org/Event/shakespeare-in-smethwick>

Eco News – 30 Days Wild!

Now the summer weather is here; it's a great time for children to get outside!

During June, The Wildlife Trust are trying to encourage children to try different outside activities with the 30 Days Wild Challenge. It doesn't need to be expensive, it could be something as simple as looking at the wildlife nearby, have a picnic or visit a park.

You can sign up with the Wildlife Trust and they will send you a pack of activities and a wallchart through the post to track your 30 days of wild activities.

[30 Days Wild | The Wildlife Trusts](#)

If you decide to take part please let us know. We would love to hear about the activities you try.

You can send us your photos or info to families@whp.greenheartlearning.org





Terrific Topic Gallery

Wednesday 19th July

In the Hall

3.30 - 4.30

All welcome

We can't wait to see all
your wonderful projects
Further details to follow
from your class
teachers.

See your child's class teacher if you
need a new Terrific Topic Letter.

SATURDAY
3RD JUNE
2023



JUNE FUN DAY!

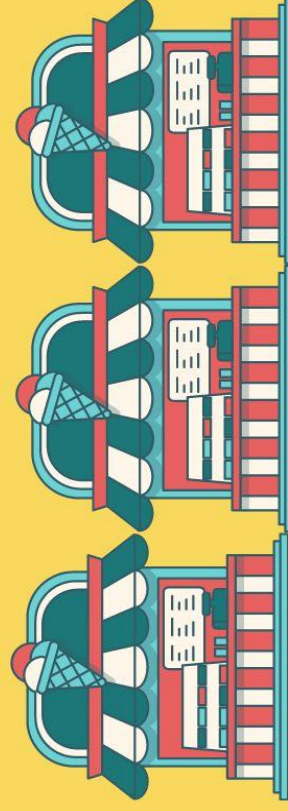
FROM
1-4PM

LOTS OF FUN
FOR ALL THE FAMILY!

TABLE TOP AND CAKE SALE
TOY SALE
CRESS/SEED PLANTING
DECORATE A BISCUIT
TOMBOLA AND RAFFLE

£10 PER TABLE
TO BOOK POP INTO
THE B32 [A1] FARADAY
HUB OR CALL
0121-725-8268

ALL PROCEEDS GO
TOWARDS YOUR
LOCAL PANTRY
QUINTON AND
FUTURE EVENTS FOR
THE COMMUNITY!



QUINTON ROYAL BRITISH LEGION
WORLDS END LANE
B32-2RX





WOODHOUSE CLOTHING BANK

After introducing the clothing and uniform bank in the Autumn term, we have now rearranged and improved access to our stock. There are all necessary uniform items for boys or girls of every age and size, with a mix of pre-loved and brand-new donated clothing.

Alongside the uniform, we have school shoes, trainers, wellies and pumps - again, in a wide range of sizes. Our new clothing rails mean that the impressive array of outdoor coats can be properly displayed and can be better selected from. Hats, scarves, gloves and bags complete the offerings.



Since setting up the uniform and clothing bank, we have been inundated with support from families in school, with the community at Woodhouse committed to helping others in this way. We are excited about what else we can do to help, and will continue to grow this provision.

Need a drying hand?

Thanks to a company called Smol and their Suds in Schools project, we also now have washing and drying facilities within school for families who are struggling with this where we can offer a discrete laundry service.

If this is of any help to anyone, please speak with Mr Kennedy.



School Admissions

Secondary School

The application window for starting Year 7 in September 2023 is now CLOSED.

For children currently in Year 5, the application period for your child will begin in September 2023 and close at the end of October. All applications are to be made online. We will send further communication in due course.

In the meantime, be on the lookout for secondary school open days as you will be more than welcome to attend these to get an early idea of where you might want to apply for.

Reception 2023

The application window to start Reception in September 2023 is now CLOSED, however, you can still make a late application by following the link below.

NOTE: Attending our Nursery does not guarantee a place. An application will still need to be made.

Follow the link below for further information and to apply when the window opens:

<https://www.birmingham.gov.uk/schooladmissions>

The application period for Reception 2024 is likely to commence in October 2023 and close in January 2024. All applications are to be made online. We will send further communication in due course.

Woodhouse Nursery

If your child is born between 01/09/2018 & 31/08/2019 then they are eligible for a place in our teacher led school nursery.

You can apply by collecting a form from our main office, head to this link: <https://forms.office.com/r/zNmQ2mVNBi> or scan the QR code below:





Many of you are already using our My Child at School platform to pay for visits, lunches and wrap around care and to receive messages from school.

We are now a cashless school so this is the only way to pay for visits, lunches and wrap around care going forward.

The platform is simple to use and is available on all smart mobile devices via their app stores.

If you haven't set this up already, please come and see the main office or email us on families@whp.greenheartlearning.org

If you have an invitation code already, you can redeem this by visiting <https://www.mychildatschool.com/MCAS/MCSParentLogin> and selecting 'redeem invitation code'.

To do this, you need your username and invitation code from your invitation email and the school ID which is 12013.

The main office will be your first port of call for any assistance with this.

Useful links

<https://homelearning.woodhouse.academy>

Additional learning resources and activities.

<https://www.woodhouse.priacademy.co.uk/news-and-events/parental-assistance>

Our parental assistance page with plenty of avenues of support.

<https://www.woodhouse.priacademy.co.uk/news-and-events/school-news>

Up to date school news.

<https://your-local-pantry.force.com/s/member-sign-up>

The Food Pantry – Quinton

<https://www.theprojectbirmingham.org/housing-advice/>

Support with housing

<https://www.cicadasports.co.uk/index.php?route=product/search&search=woodhouse>

To purchase school uniform and PE kits.

[School uniform also available from Somal Fashions at 11 Faraday Avenue, Quinton, B32 1JP – 0121 423 2969](#)

https://www.woodhouse.priacademy.co.uk/images/image_gallery/large/1664897398.pdf

Our updated uniform policy and guidance