

NEWSLETTER



11th June 2021

How to get in touch



@WoodhousePA



0121 464 1769



www.woodhouse.priacademy.co.uk



enquiries@woodhouse.uwmat.co.uk



07950368561 – Families mobile to call or text with any queries. Monitored by the Inclusion Team



families@woodhouse.uwmat.co.uk

- Use this for any queries. Monitored by the Inclusion Team



sensupport@woodhouse.uwmat.co.uk

- Use this for any queries about any additional learning needs or concerns.



homelearning@woodhouse.uwmat.co.uk

- Use this for any support with home learning or using Google Classroom.



Newsletter@woodhouse.uwmat.co.uk

- Use this to send us anything you'd like put in the newsletter. This can be photos, learning, resources and any good news stories you may have.

Useful links

<https://homelearning.woodhouse.academy>

Additional learning resources and activities.

<https://www.woodhouse.priacademy.co.uk/news-and-events/parental-assistance>

Our parental assistance page with plenty of avenues of support.

Up to date school news.

<https://www.woodhouse.priacademy.co.uk/news-and-events/school-news>

Access our latest risk assessment, detailing our safety measures.

<https://www.woodhouse.priacademy.co.uk/news-and-events/wider-opening>

The Food Pantry – Quinton

<https://your-local-pantry.force.com/s/member-sign-up>



The following children are Stars of the Week for the week ending 11th June

Nursery

Remy
Lina

Reception

Sophie
Ahmed
Daria
Carter

Year One

Shona
Wafaa
Kirstyn
Anaia

Year Two

Aaliyah
Vanessa
Nafees
Eleanor

Year Three

J'Zai
Sienna
Maryam
Adam B
Jessica

Year Four

Mylee
Ariana
Heidi
Rory

Year Five

Alaiza
Faisal
Raihan
Sapphire

Year Six

Tejas
Leo
Yasmin R
Pria
Shakeera
Yasmin A

Congratulations to all of these children who have put in a fantastic effort this week. They have been nominated by their teachers. We are really impressed with the level of learning from all children. What can you do to be Star of the Week next week?



School Dinner Menu

14th – 18th June

NOTE: Now we are using cutlery with our meals again we are currently making changes to our menus to introduce more of a variety of meals. Keep an eye on the menu each week for changes.

Monday	Tuesday	Wednesday	Thursday	Friday
Chicken Nuggets	Beef Pasta Bolognese	Chicken and Yorkshire Pudding	Picnic Day	Cheese and Tomato Pizza
Vegetable Nuggets	Quorn Bolognese	Quorn and Yorkshire Pudding	Ham or Cheese Sandwich	
With Mini Waffles and Baked Beans	With Garlic Bread	With Potatoes, Vegetables and Gravy	Vegan Sausage Roll	Chips
Yoghurts	Raisins	Brownie	With Crisps and Cherry Tomatoes	Fresh Vegetables or Salad
			Jam Doughnut	Fruit

Food Allergies

In order to keep our dietary records up to date, please inform the main office of any changes to your child's dietary requirements, allergies and intolerances. We are able to cater for most requirements but must know in advance.

If your child only eats Halal meats but can eat fish, please also let the main office know. We do not serve Halal meats.

Please either contact the main office on 0121 464 1769 or email the Inclusion Team on families@woodhouse.uwmat.co.uk

Please also remember that we are a NUT FREE school.

Summer Term 2021

Monday 7th June – First day back for all children

Tuesday 20th July – Last day of school year for children

Wednesday 21st July – Inset day, school closed to children



The Horrible Giant by J'Zai in 3A

The horrible giant wouldn't let the angry, upset children play in his garden. Some of them were really blue and angry. They didn't care about getting chased or prosecuted. They started painting another giant and laughing. They played in the giant's garden because they had nowhere to play. Some of the little brothers and sisters, were scared that they will get prosecuted. Their big brother or sister hugged them tight so they didn't feel scared.

"You don't need to be scared brother," the big brother stated.

The big sister hugged her little sister really tight. The sign made them even more worried.

"I am starting to get more scared," wailed the little sister.

When the giant arrived home, he looked through his window and saw the children doing some paintings on his wall. He became really angry with rage. He wanted to kill them because they didn't listen to the sign.

"Those children are going to pay!" shouted the giant as he shook his fists.

He stomped out of his house breaking everything. When he was outside, the children could hear the stomping.

"Is that a dinosaur?!" asked one of the children.

"No!" laughed one of the older children.

Book some time to Read



The total word count on Accelerated Reader for school this half term is 51,517,794 overall with A total of 4790 quizzes been passed.

Phoebe in 4W has reached her 250,000-words read milestone.

Tanisha in 5H and Fareed in 5WS have both reached their 500,000-words read milestone.

If you haven't already, pick up a book or logon to Myon or EPIC and enjoy reading! There are now over 5000 books on Myon ready to start reading.

<https://www.myon.co.uk/login/>

epic!



Epic! Is a free online library where children can read lots of very popular books Check it out here: <https://www.getepic.com/students>

Reading Diaries

As we haven't been able to send reading diaries home all children in years 1-6 now have a Reading diary in the form of a google form on their Google Classroom in the Reading Diary Topic.

The same form can be filled in each time they read and submitted for the teacher to read.

Each time diary is filled in it will add a new entry to their online diary which is kept as a record for the teacher just like their reading diary booklet.



RECOMMENDED READS!

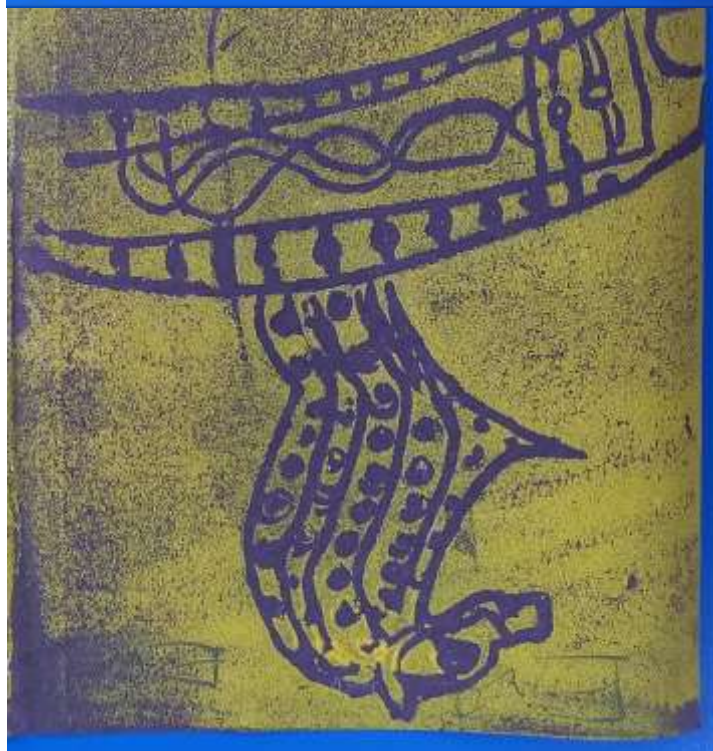


Join Strange Planet's lovable parent and child aliens as they embark on a quest to understand the vibrating creature (that's a cat to us humans) that is stalking around their house. As the aliens closely observe the creature, they discover all their differences and what they have in common. This paper-over-board picture book has all the literal-minded charm of Nathan's previous books, and is written with parents and kids in mind. It's perfect for playtime, bedtime, or anytime!





Year 3 have been looking at and making drawings of the Staffordshire Hoard. Children then made Polytile prints.



The
ART
Corner

Poetry from 4W

Diversity

Difference is key

Individuality

Very much peculiarity

Even when you try not to show it

Racism, sexism isn't right

See you are beautiful no matter what

I believe that I am beautiful

To everyone I think you are too

You have to believe, that is why!

DEFORESTATION by Ahmed

Don't cut trees.

Everyone will maybe die.

Forests are key for animals to survive.

Or animals will start to die if you keep cutting trees.

Remember trees are important for us to live.

Every day our tree countdown goes down.

So don't cut trees or our lives are in danger.

To you and animals

And

Take care of forests

I will remember orangutans and tigers and I hope you do too and don't cut trees

Or there might be a consequence to face

Never forget deforestation was a thing

DIVERSITY by Ahmed

Diversity is a big thing

In every place

Valued to keep people nice

Everyone hates

Racism but loves

Society and education to work

Indoors and at school

To everyone make sure to stay
educated

You will thank me later while
staying educated

DIVERSITY by Dilraj

Diversity is

Important and

Valued.

Everybody likes

Rainbows.

So difference is

Important

To

You!



4W have been learning about deforestation and have made this wonderful poster. They have also been making clay volcanoes in their art lessons.



The Inclusion Team at Woodhouse



Miss Mason
SENCo
Assistant
Head



Mr Parslow
Deputy
Head
Behaviour
Lead



Mr
Kennedy
Learning
Mentor



Mrs
Kennedy
Pastoral
Lead

The Inclusion Team at Woodhouse work together with children and families to offer and provide support and opportunities to ensure that all have the chance to achieve and succeed.

If you have anything you would like to discuss with a member of the team regarding your child or children's learning, behaviour, well-being, health or anything else then please get in touch. families@woodhouse.uwmat.co.uk

If you'd like to get in touch with us regarding Special Educational Needs, you can do this by emailing us at sensupport@woodhouse.uwmat.co.uk

The Inclusion Team will also be on the front and rear gates at the start and end of the day and will be more than happy to talk.

We would like to remind families that if times are difficult or you are going through a tough time, you need only ask and we will do all we can. Of course, we are always here for your children, and we will do anything which we can do to help them to learn, succeed and become fine citizens. We are also there for our families and the wider school community. If we can help in any way: with food bank support, support with uniforms and clothing or with any other aspect of life, then please get in touch. If we cannot help directly, we can often sign post to the support needed and help you to access assistance. Please don't suffer in silence.

Zoom or Phone appointments can be made at any point during the school week.

Anna Freud
National Centre for
Children and Families

shout
85258
here for you 24/7

**Feeling overwhelmed?
Struggling to cope?**

24
hours a day
7
days a week

Text AFC to 85258

Text the free, confidential textline

All texts are answered by trained volunteers,
with support from experienced clinical specialists



Be
Empowered.....

Early Support Programme for SEND Parent Carers

Be Empowered Workshops

The First Face to Face workshop since the start of the Covid19 Pandemic

Every Wednesday 10am – 2pm (for 6 weekly sessions)

Starting Wed 9th June, Wed 16th, Wed 23rd, Wed 30th, Wed 7th July and
Wed 14th July

**At The Oak Centre @ St Michaels Church, 17 Redstone Farm Road,
Hall Green, Birmingham B28 9NU**

Are you a parent
of a child with
special or
additional
needs?

Do you want to meet with
other parents and learn more
about local and national
services and what they can
offer?

Do you want to feel more
confident about working with
practitioners and making
decisions about your child's
journey?

We warmly invite you to a series of workshops that have been written by and are led by trainers who are parent/carers of a child with additional needs themselves.

These workshops are for parent/carers of children and young people of any age, with any additional need, following diagnosis. They are an attempt to support parent/carers through times of change and at whatever stage of the journey participants may find themselves.

TO BOOK:

This workshop is going to be conducted in a number of community languages.

For more information contact:

Gulshan Hussain on
07827 082 752 or email

Gulshan.P.Hussain@birmingham.gov.uk

Contact school for more information on

sensupport@woodhouse.uwmat.co.uk



URDU

PUNJABI



GREEK



ENGLISH



FRENCH



SOMALI



We've all been through a tough time recently.

The following organisations have partnered to provide services and support, which might make life a little bit easier...

Birmingham Children's Partnership includes: Birmingham City Council, Birmingham Children's Trust, Birmingham and Solihull Clinical Commissioning Group, Birmingham Community Healthcare NHS Foundation Trust, Birmingham Women's and Children's NHS Foundation Trust, West Midlands Police and Birmingham Voluntary Sector Council.

There is support available for domestic abuse, parenting courses, mental health support, financial help, alcohol and drug problems, bereavement support and more.

Follow these links to find out more:

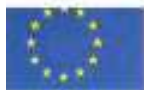
<https://www.birmingham.gov.uk/love>

https://www.birmingham.gov.uk/info/50224/birmingham_children_s_partnership/2156/birmingham_children_s_partnership_-_resources

Alternatively, speak to a member of the Inclusion Team for more advice / support.

In most cases, you can self-refer for support.

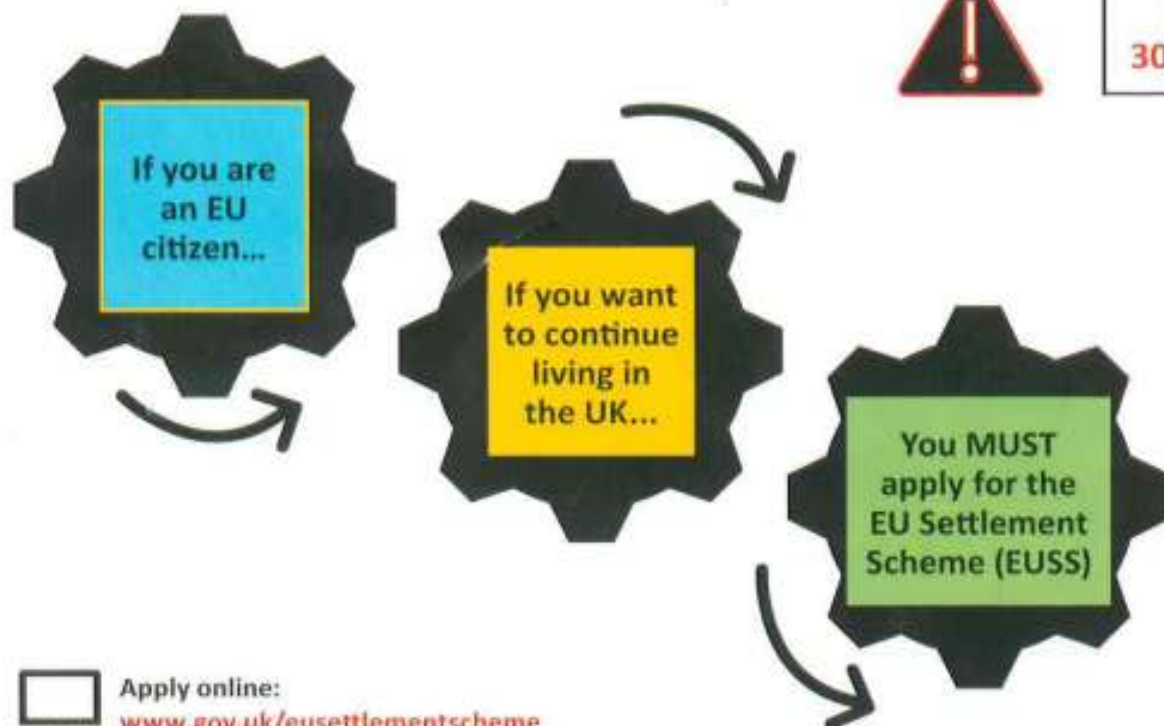
One example of support they can offer is with emergency food and supplies grants of up to £100.



For the urgent attention of the EU citizens living in the UK



Deadline
30 JUNE 2021



Apply online:

www.gov.uk/eusettlementscheme



West Midlands
Combined Authority



Birmingham
City Council

CITY OF
WOLVERHAMPTON
COUNCIL

Dudley

Sandwell

Redditch

Walsall Council

Coventry City Council



Eligible countries:
Austria,
Belgium,
Bulgaria,
Croatia,
Republic
of Cyprus,
Czech
Republic,
Denmark,
Estonia,
Finland,
France,
Germany,
Greece,
Hungary,
Ireland, Italy,
Latvia,
Lithuania,
Luxembourg,
Malta,
Netherlands,
Poland,
Portugal,
Romania,
Slovakia,
Slovenia,
Spain,
Sweden,
Iceland,
Liechtenstein,
Norway,
Switzerland



EU Settlement Resolution Centre: 0300 123 7379



Get FREE application support: <https://bit.ly/2QARLPa>



BLOOMING QUINTON



We are Blooming Quinton, a local community project committed to taking pride in our area



We are looking for volunteers to join us in transforming our grey space into green space



**No experience necessary,
this is about building
community and having fun!**

If you can do any of the following please contact our Blooming Quinton team:

1. Volunteer a few hours a month?
2. Donate plants or seeds
3. Identify spaces that can be beautified
4. Adopt a space

Call or text

07811 502970



Visit the B32 Community Facebook page: <https://www.facebook.com/b32community>
Or the Quinton Facebook page: <https://www.facebook.com/groups/thequintonpage>

Edgbaston
Neighbourhood
Network Scheme **ENNS**

 **Birmingham**
City Council